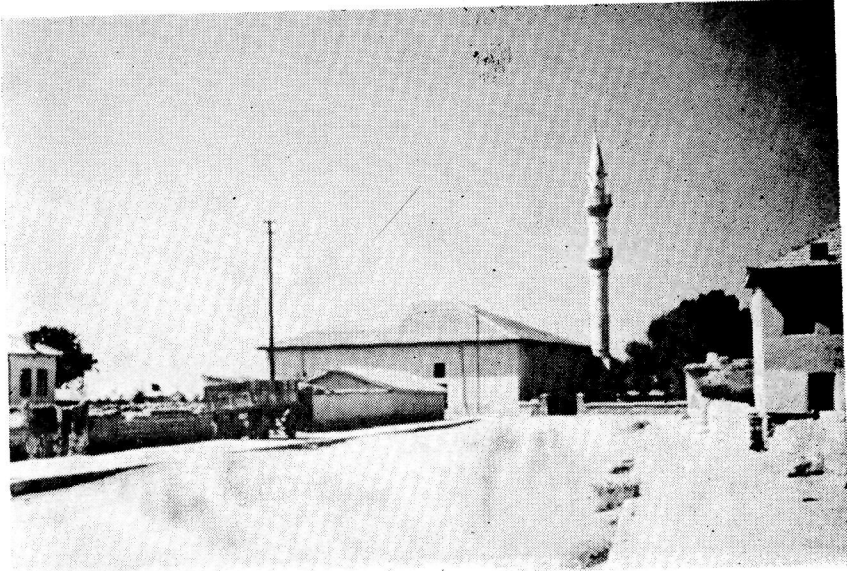


Res. 11— Burdur Müzesi'ndeki 1153 Env. No.lu Osthotek.



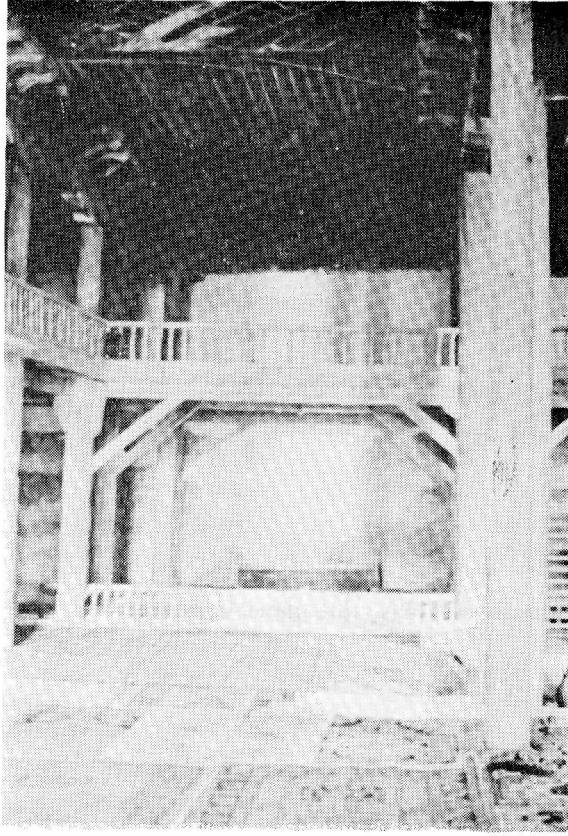
Res. 12— Denizli Müzesi'ndeki Taş Levha.



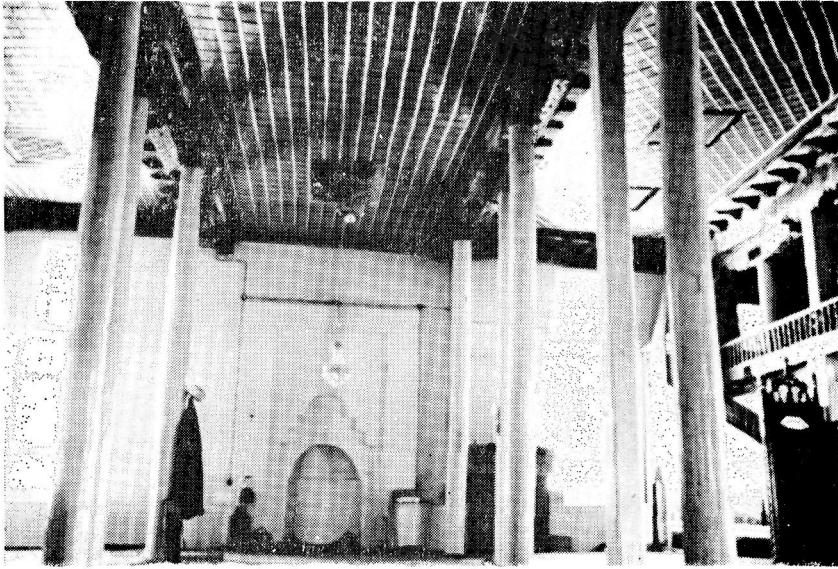
Res. 1— Eski Ulu Cami, genel görünüş.



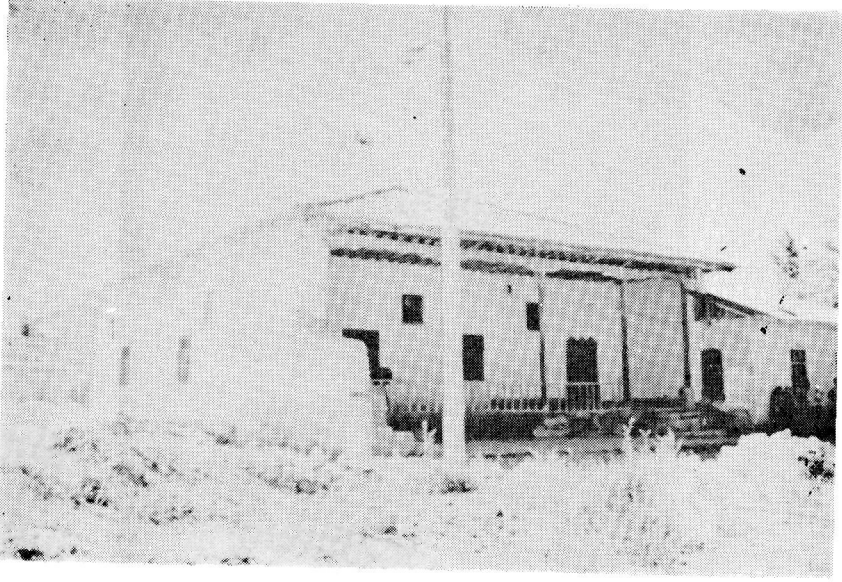
Res. 2— Eskil Ulu Cami, kitabe.



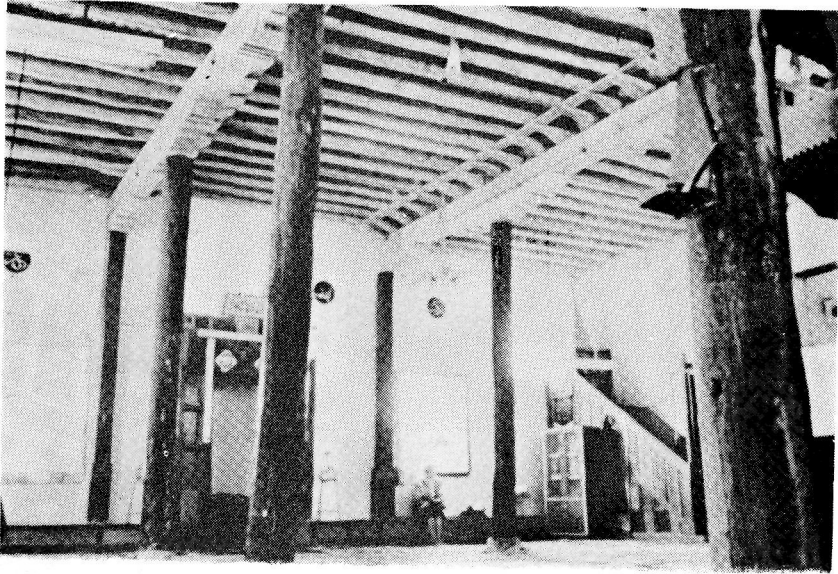
Res. 3— Eski Ulu Cami, 1984 yılındaki onarımından önceki görünümü.



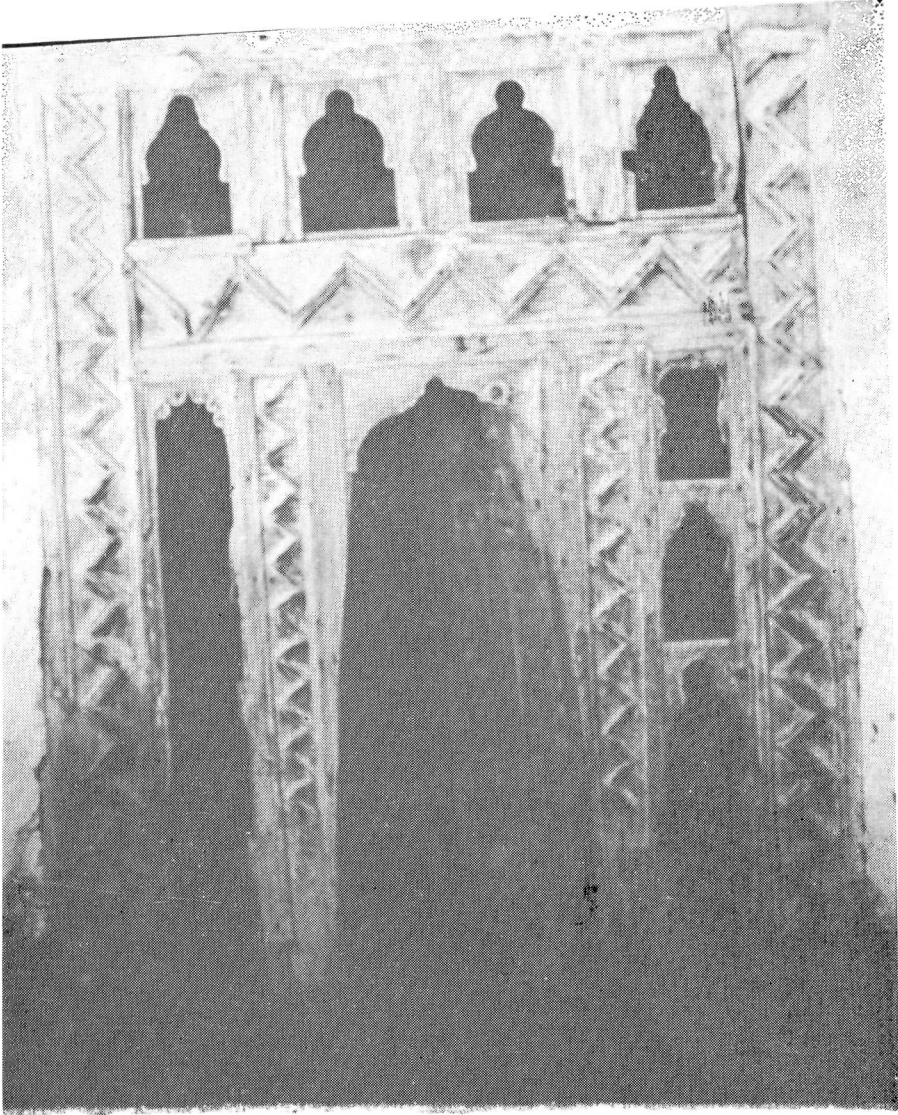
Res. 4— Eski Ulu Cami, 1984 yılındaki onarım sonrası, orta sahnın görünüşü



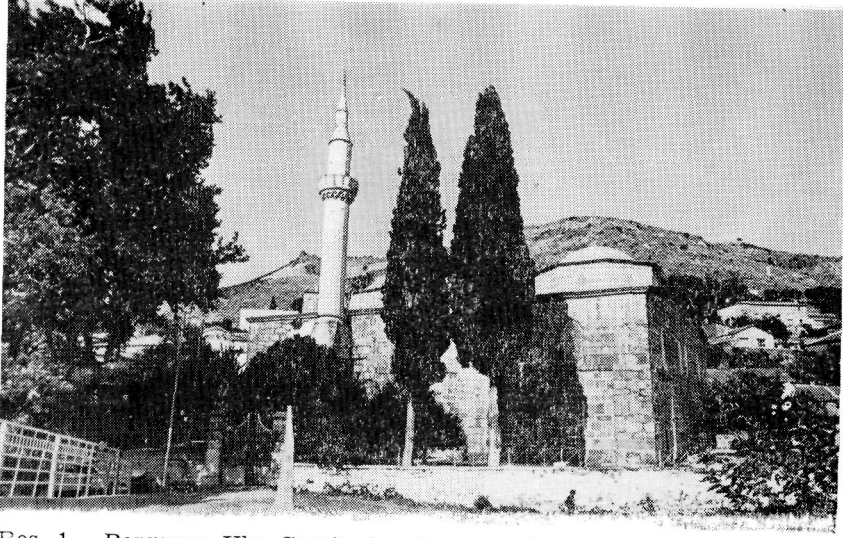
Res. 5— Eşmekaya Ulu Camii, genel görünüş.



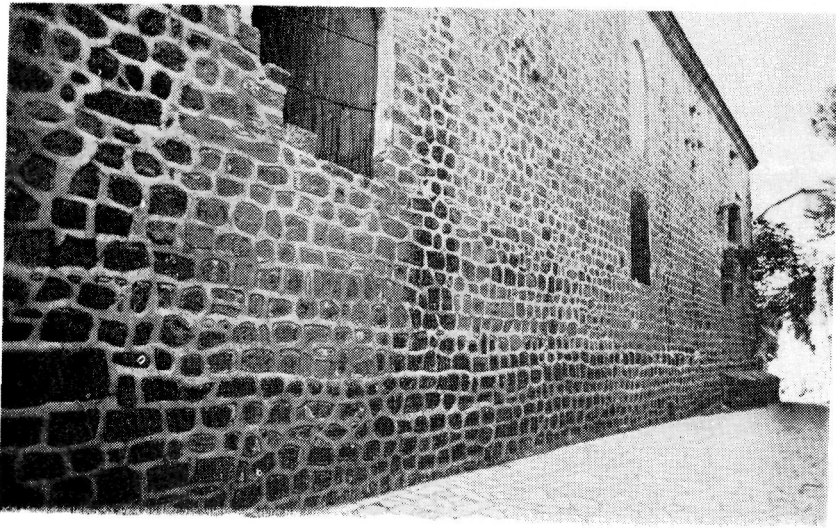
Res. 6— Eşmekaya Ulu Camii, mihrap ve minber.



Res. 7— Esmekaya Ulu Camii, son cemaat mahallindeki ahşap mihrap.



Res. 1— Bergama Ulu Camii, batıdan genel görünüş.



Res. 2— Bergama Ulu Camii, doğu cephe.